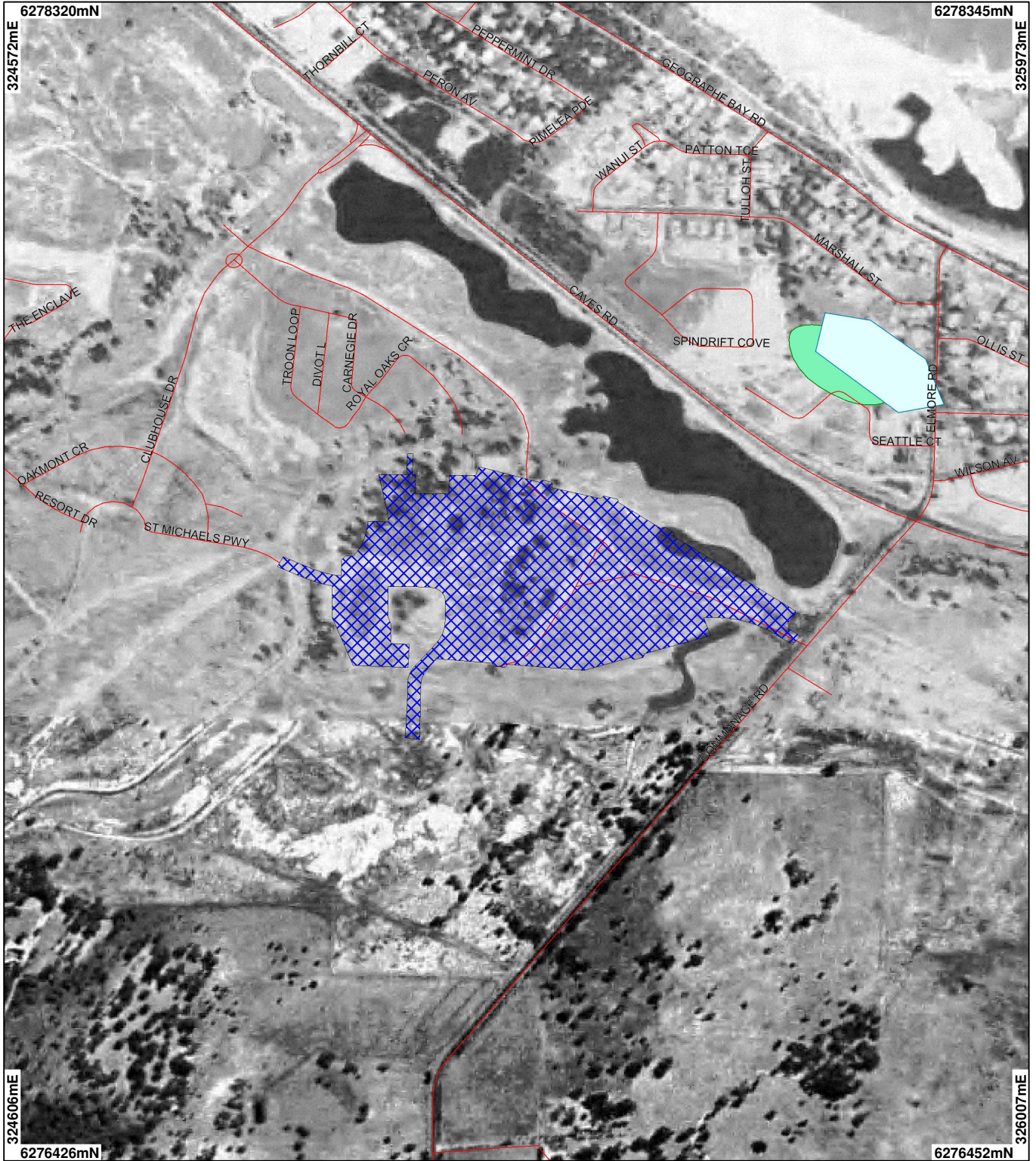


# CPS 1413 MAP



## LEGEND

- |  |  |   |
|--|--|---|
| <ul style="list-style-type: none"> <li>● Priority 1 - Poorly Known Taxa</li> <li>● Priority 2 - Poorly Known Taxa</li> <li>● Priority 3 - Poorly Known Taxa</li> <li>● Priority 4 - Poorly Known Taxa</li> <li>● Declared Rare Flora - Extant Taxa</li> <li>● Declared Rare Flora - Presumed Extinct Taxa</li> </ul> | <ul style="list-style-type: none"> <li>■ Clearing Regulations - Environmentally Sensitive Areas - DOE 30/5/05</li> <li>— Road Centrelines - DLI 1/5/04</li> <li>● Towns - DLI 8/04</li> <li>■ Clearing Instruments (cont)</li> </ul> | <ul style="list-style-type: none"> <li>■ Areas Applied to Clear</li> <li>■ Areas Subject to Conditions</li> <li>■ Areas Approved to Clear</li> <li>■ Lakes, 1M - GA 01/06/00</li> <li>■ Geodata, Lakes - GA 28/06/02</li> </ul> |
|--|--|---|

CollieBusseton 2.5m Orthomosaic - DOLA 99



0 ————— 250 m

Scale 1:8697

(Approximate when reproduced at A4)

Geocentric Datum Australia 1994

Note: the data in this map have not been projected. This may result in geometric distortion or measurement inaccuracies.

..... Date .....

Officer with delegated authority under Section 20 of the Environmental Protection Act 1986

Information derived from this map should be confirmed with the data custodian acknowledged by the agency acronym in the legend.



WA Crown Copyright 2012

\* Project Data. This data has not been quality assured. Please contact map author for details.